



Rotostrip

Surface Preparation Tool

Operations & Maintenance

ROT0100
ROT0101
ROT0102



www.Novatekco.com

© Copyright 2011 by NOVATEK Corporation

All rights reserved printed in the United States of America. No part of this manual may be used or reproduced in any form or by any means, stored in data base or retrieval system, without prior written permission from NOVATEK Corporation.

Making copies of this manual for any purpose other than your own personal use is a violation of the United States copyright laws.

March 1, 2016 issue 1.0

Specifications subject to changes without notice!

If you have any questions, please contact us:

NOVATEK CORORATION

700 Schell Lane

Phoenixville, PA 19460

USA

www.novatekco.com

Toll Free 866 563-7800

Telephone: +1 610 363-7800

Fax +1 610 935-1945

Email: Sales@Novatekco.com

OPERATION AND MAINTENANCE MANUAL FOR

ROTOSTRIP – SURFACE PREPARATION TOOL

NOTICE

FOR PROFESSIONAL USE ONLY



WARNING



**IMPORTANT SAFETY INFORMATION ENCLOSED.
READ AND UNDERSTAND THIS MANUAL BEFORE OPERATING THIS PRODUCT.**

**IT IS YOUR RESPONSIBILITY TO MAKE THIS SAFETY INFORMATION
AVAILABLE TO OTHERS THAT WILL OPERATE THIS PRODUCT.**

FAILURE TO OBSERVE THE FOLLOWING WARNING COULD RESULT IN INJURY.



PLACING TOOL IN SERVICE

- Always install, operate, inspect and maintain this product in accordance with all applicable standards and regulations (local, state, country, federal, etc.).
- Compressed air models always use clean, dry air at 90 psi (6.2bar/620kPa) maximum air pressure at the inlet. Higher pressure may result in hazardous situations including excessive speed, rupture, or incorrect output torque or force.
- Electric models must always utilize proper gauge, and rated electrical cords with correct connections.
- Be sure all hoses and fittings are the correctly sized and secured.
- Ensure an accessible emergency shut off has been installed in the air or electrical supply line. Make others aware of its location.
- Do not use damaged, frayed, or deteriorated air hoses and fittings.
- Always use proper gauge electrical cords with correct connections. (When applicable.)
- Electric models must not use damaged, frayed, or deteriorated electrical cords and connections.
- Keep clear of whipping air hoses. Shut off the compressed air before approaching a whipping hose.
- Always turn off and disconnect the tool from its power supply before installing, removing or adjusting any accessory, or before performing any maintenance on the tool.
- Do not lubricate tools with flammable or volatile liquids such as kerosene, diesel or jet fuel. Use only recommended lubricants.
- Keep work area clean, uncluttered, ventilated and illuminated.
- Keep all electrical connections clear of water or other liquids. (When applicable.)
- Do not operate the machine while flammable or volatile liquids such as gasoline, diesel or jet fuel are present. Failure to do so can result in explosion. (When applicable.)
- Do not remove any labels. Replace any damaged label.

USING THE TOOL

- Always wear protection when operating or performing maintenance on this tool.
- Always wear hearing protection when operating this tool.
- Always use Personal Protective Equipment appropriate to the tool used and material worked. This may include dust mask or other breathing apparatus, safety glasses, ear plugs, gloves, apron, safety shoes, hard hat and other equipment,
- Prevent exposure and breathing of harmful dust and particles created by power tool use:
 - Some dust created by power sanding, sawing, and grinding, drilling, and other construction activities contains chemicals known to cause cancer, birth defects or other reproductive harm. Some examples of these chemicals are:
 - Lead from lead based paints,
 - Crystalline silica from bricks and cement and other masonry products, and
 - Arsenic and chromium from chemically treated lumber
- Your risk from these exposures varies, depending on how often you do this type of work. To reduce your exposure to these chemicals: work in a well ventilated area, and work with approved safety equipment, such as those dust masks that are specially designed to filter out microscopic particles.
- Keep others a safe distance from your work area, or ensure they use appropriate Personal Protective Equipment.
- This tool is not designed for working in explosive environments, including those caused by fumes and dust, or near flammable materials.

- Electrically powered tools are not insulated against electric shock.
- Be aware of buried, hidden or other hazards in your work environment. Do not contact or damage cords, conduits, pipes, or hoses that may contain electrical wires, explosive gases or harmful liquids.
- Keep hands, loose clothing, long hair and jewelry away from working end of tool.
- Power tools can vibrate in use. Vibration, repetitive motions or uncomfortable positions may be harmful to your hands and arms. Stop using any tool if discomfort, tingling feeling or pain occurs. Seek medical advice before resuming use.
- Keep body stance balanced and firm. Do not overreach when operating this tool. Anticipate and be alert for sudden changes in motion, reaction torques, or forces during startup and operation.
- Tool and/or accessories may briefly continue their motion after throttle is released,
- To avoid accidental starting – ensure tool in “off” position before applying air pressure or connecting to electricity. Avoid throttle when carrying, and release throttle with loss of air or electricity.
- Ensure work pieces are secure. Use clamps or vises to hold work piece whenever possible.
- Do not carry or drag the tool by the hose or power cord.
- Do not use power tools when tired, or under the influence of medication, drugs, or alcohol.
- Never use a damaged or malfunctioning tool or accessory,
- Do not modify the tool, safety devices, or accessories.
- Do not use this tool for purposes other than those recommended.
- Use accessories recommended by Novatek Corp.
- Never operate a tool with an accessory unless it is properly installed and the tool is held firmly against the work,
- Always use a retainer, when furnished, in addition to proper barriers to protect persons in surrounding or lower areas from possible ejected accessories.
- When wearing gloves and operating models with inside trigger, always be sure that the gloves will not prevent the trigger from being released.
- Wear safety shoes, hard hat, safety goggles, gloves, dust mask and any other appropriate protective clothing while operating the tool.
- Do not indulge in horseplay. Distraction can cause accidents.
- Keep hands and fingers away from the throttle lever until it is time to operate the tool.
- Never rest the tool on your foot.
- Never point the tool at anyone.
- Compressed air is dangerous. Never point an air hose at yourself or others.
- Never blow clothes free of dust with compressed air.
- Be sure all hose connections are tight. A loose hose not only leaks but can come completely off the tool and while whipping under pressure, can injure the operator and other in the area. Attach safety cables to all hoses to prevent injury in case a hose is accidentally broken.
- Never disconnect a pressurized air hose. Always turn off the air supply and bleed the tool before disconnecting a hose.
- When applicable, the operator must keep limbs and body clear of the chisel. If a chisel breaks, the tool with the broken chisel projecting from the tool will suddenly surge forward.
- Do not ride the tool with one leg over the handle. Injury can result if the chisel breaks while riding the tool.
- Know what is underneath the material being worked. Be alert for hidden water, gas, sewer, telephone or electric lines.
- Use only proper cleaning solvents to clean parts. Use only cleaning solvents which meet current safety and health standards. Use cleaning solvents in a well ventilated area.
- Do not flush the tool or clean any parts with diesel fuel. Diesel fuel residue will ignite in the tool when the tool is operated, causing damage to internal parts. When using models with outside triggers or throttle levers, take care when setting the tool down to prevent accidental operation.
- Do not operate the tool with broken or damaged parts.
- Never start the tool when it is lying on the ground.
- This tool is not designed for working in explosive atmospheres.

TABLE OF CONTENTS

SECTION I

INTRODUCTION.....	6
-------------------	---

SECTION II

GENERAL DESCRIPTION	6
---------------------------	---

SECTION III

WORKING AREA	6
PERSONAL SAFETY.....	6

SECTION IV

TOOL CARE AND USAGE	6
SPECIAL SAFETY INSTRUCTIONS	7

SECTION V

PLACING IN OPERATION.....	8
ABRASIVE BRUSH ASSEMBLY	8
ERASER WHEEL ASSEMBLY	9

SECTION VI

SERVICE INSTRUCTIONS	9
TROUBLESHOOTING	9

SECTION VII

PARTS BREAKDOWN.....	10
DIAGRAM OF UNIT	10
NOVATEK CORPORATION LIMITED WARRANTY	11

SECTION I

INTRODUCTION

This operation and maintenance manual is furnished with each **RotoStrip** unit. It outlines general equipment use and the operation and maintenance requirements for efficient and safe operation.

READ ALL INSTRUCTIONS AND DATA IN THIS OPERATION AND MAINTENANCE MANUAL PRIOR TO OPERATION OF THIS EQUIPMENT.

These instructions are for your protection and convenience. Please read them carefully since failure to follow the precautions could result in injury. Whenever using powered equipment, basic safety precautions should be followed.

If after reading this manual anything seems unclear, contact a **NOVATEK** authorized distributor or **NOVATEK** directly by dialing 1-866-563-7800.

SECTION II

GENERAL DESCRIPTION

The **RotoStrip** is an easy to handle, light weight surface preparation tool with a lot of power. This versatile piece of equipment utilizes a variety of abrasives from wire brushes, coating removal discs to erasers for removal of adhesive products.

SECTION III

WORKING AREA

Inspect the unit for any loose or damaged parts every time prior to use.

CAUTION: Make sure power supply is off prior to inspection!

1. Keep your working area clean from dirt and debris. A cluttered working area is dangerous!
2. NEVER allow unauthorized individuals or individuals operate the tool without proper safety attire or even enter the work area.
3. ALWAYS operate the RotoStrip in a well ventilated area.

PERSONAL SAFETY

1. Always wear suitable protective clothing. NEVER wear loose fitting clothing, jewelry or other items that could become trapped in moving parts. Wear gloves and shoes with non-skid shoes.
2. Always wear safety glasses, face mask and hearing protection.
3. Make sure you have a firm grip on the tool before you begin operation.

SECTION IV

TOOL CARE AND USAGE

1. After fitting the RotoStrip hub with your appropriate accessory remove the hex socket wrench and re-attach any removed parts before operation.

CAUTION: Make sure the hex socket wrench is removed before start up!

2. NEVER carry the tool connected to power source anywhere other than your designated work area. Make certain that your hand is nowhere near the starter.

3. Work at a safe distance to ensure that individuals cannot be injured by debris.
4. Follow the instructions on lubrication and proper replacement of tool accessories.
5. When not in use, prior to servicing and on changing accessories, switch off the tool and disconnect from the power source.
6. Prior to replacing accessories, the tool **MUST BE** removed from power source. **DO NOT** perform any servicing work on the tool when it is connected to the power source.
7. Regularly check pneumatic lines, electrical cords and replace them if they are damaged. Keep vertical handle and tool body dry, clean and free of oil and grease.

CAUTION: An unmaintained tool can cause accidents!

SPECIAL SAFETY INSTRUCTIONS

1. Prior to operating the tool, always check for faulty and or defective parts. Never use the tool if it is damaged in any way. Any damaged safety features, starter lever or other faulty parts are to be repaired or replaced **IMMEDIATELY** before usage.
2. Always use both hands when operating the RotoStrip.

CAUTION: NOVATEK's accessories are designed for use on RotoStrip tools and therefore should not be utilized on or in conjunction with any other machines.

3. After replacing any accessory check the adapter system for correct assembly before operating the machine.
4. For pneumatic model insure that sufficient length of air hose, supplied with a minimum of 5 SCFM compressed air at 90 psi, is available. A supply of clean, dry air and suitable lubrication is recommended for trouble free use. Tighten all hose connector fittings and blow out hose to insure that all debris is purged from the supply line before use.
5. For electric model wipe down the outside surface of the drive motor enclosure to remove accumulated dirt, dust and other residue from preceding cleaning operation. Test run the motor to insure no arcing is indicated between the brushes. If arcing takes place and additional air jet cleaning does not correct the arcing, contact a **NOVATEK** authorized distributor or **NOVATEK** directly by dialing 1-866-563-7800.
6. Check the compressed air at regular intervals to ensure the compressed air is clean and oiled. If it is necessary integrate a service until into the compressed air line.
7. If the tool is not in use, disconnect it from the air supply and store it in a suitable clean/dry location to prevent any unauthorized use.
8. **ALWAYS** hold both the tool body and the vertical handle while in use.
9. Keep in mind that brushes can create sparks while running on hard surfaces. Take precautions while in use.

CAUTION: ALWAYS wear eye protection to prevent injuries.

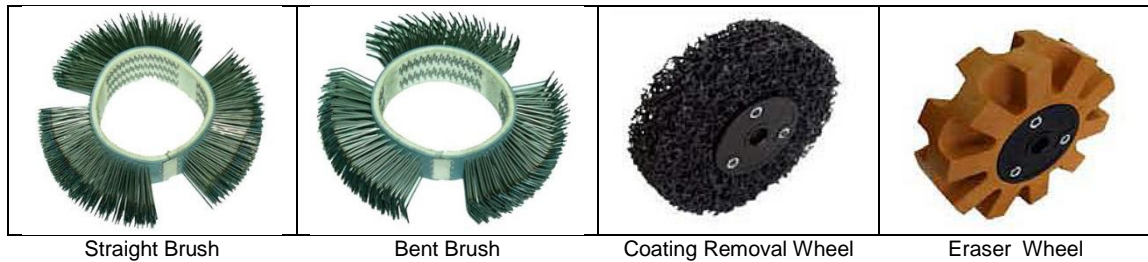
10. Never carry the tool by the air hose or power cord. Protect lines against heat, sharp edges and the possibility of running over while in use.
11. If the tool suddenly feels different, production level suddenly drops or produces a different noise, the tool should be shut down immediately and checked for any possible damage.

SECTION V

PLACING IN OPERATION

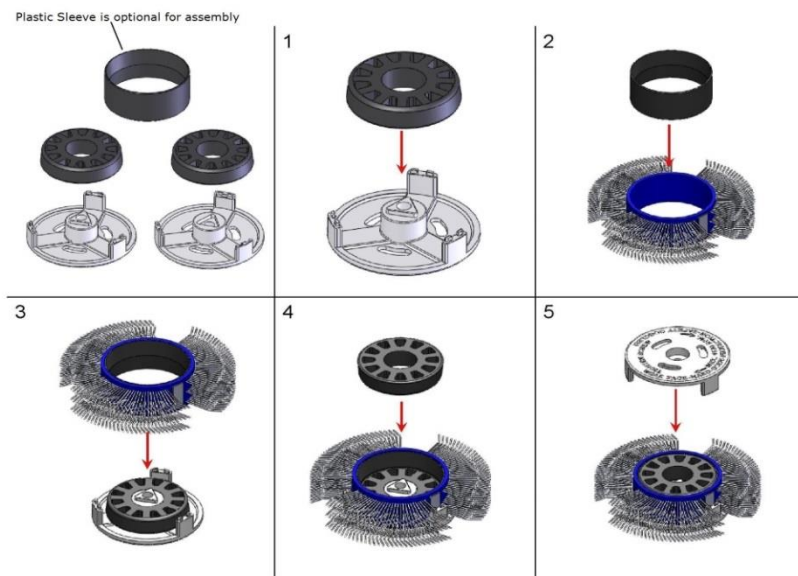
This tool is used for the removal of rust, corrosion, mill scale, protective coatings, body filler, adhesive labels, etc.

1. Always use suitable sealing material to fasten the connection of the pneumatic hose to the **RotoStrip**.
2. There are two sizes of abrasive brushes to choose from; 11mm or 23mm straight or bent bristle brushes along with 23mm erasers and coating removal wheels.

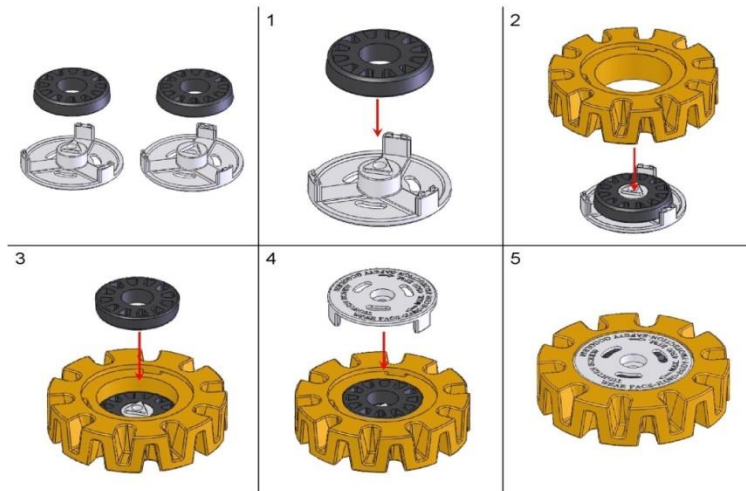


3. **NEVER** place an 11mm abrasive into a 23mm hub or vice versa. This can cause damage to the machine and operator.
4. Start the tool by moving the safety stop forward and depressing the throttle level. The throttle level will return to its initial position when it is released.
5. **NEVER** operate the tool while not in contact with the work surface or if there is the possibility of bodily contact with the rotating hub.
6. Hold the tool by the body and the vertical handle at the same time. This is to ensure proper substrate removal and secure handling of the tool during operation.
7. Work only with minimum surface pressure and even movements across surface. Excess pressure can reduce the desired results and wear abrasives prematurely.

ABRASIVE BRUSH ASSEMBLY



ERASER WHEEL ASSEMBLY



SECTION VI

SERVICE INSTRUCTIONS

The tool is to be serviced only by a Novatek Technician. Improper use of service of the **RotoStrip** can also result in injury or damage to the machine. Unauthorized parts or services of the **RotoStrip** will void the warranty.

TROUBLESHOOTING

Here are some trouble shooting and maintenance tips:

- A. If the abrasive hub is not turning or turning slowly.**
 - a. Check the power source.
 - b. Check air hose or power cord for cracks or any imperfections.
 - c. Clean tool thoroughly with compressed air and a clean cloth.
 - d. Increase compressor pressure and verify compressor can produce enough SCFM.
 - e. Check Panel Box circuit breaker.
 - f. Add a few drops of oil to the compressed air connection and air inlet of pneumatic tool.

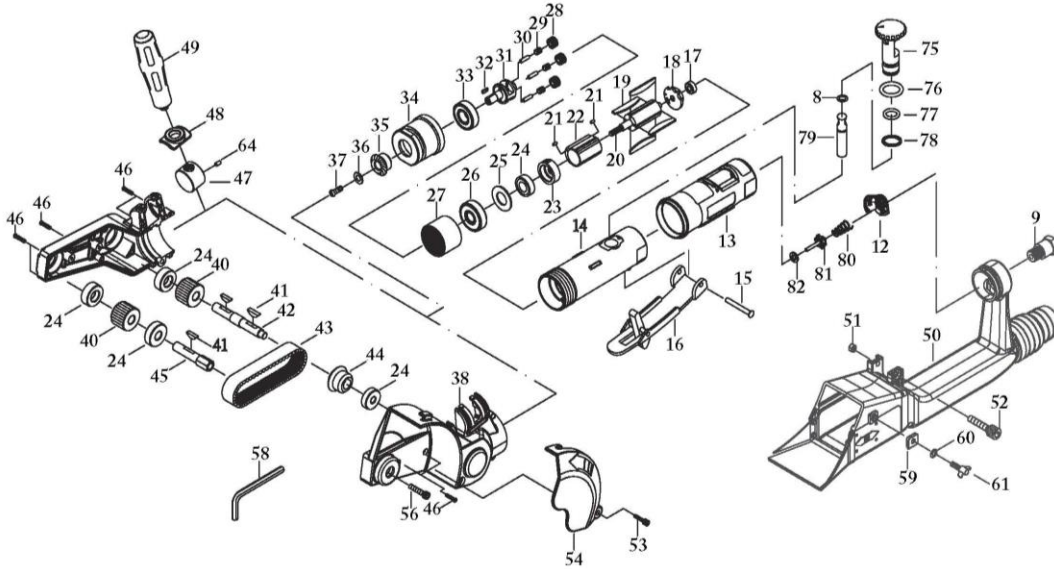
- B. If the machine is making an unusual sound.**
 - a. Check the same connections as listed above.
 - b. Make sure hub assembly is together properly.
 - c. Check to ensure hub is attached properly to drive motor.
 - d. Make sure there are no obstructions near moving parts.
 - e. Check and replace any worn abrasives or parts.

- C. Heavy vibration of the Rotating Abrasive.**
 - a. Check hub assembly for proper fit and wear.
 - b. Replace with new hub assembly.

- D. Hub Assembly comes undone during operation.**
 - a. Check to ensure hub screw is tight.
 - b. Use a separate lock washer and tighten screw to secure connections.

IF AFTER FOLLOWING THESE PROCEDURES REGULAR OPERATION IS NOT RESTORED CONTACT A NOVATEK FACTORY TECHNICIAN.

ROTOSTRIP



Part #	Discription	Quantity	Part #	Discription	Quantity	Part #	Discription	Quantity
ROTO08	O-RING (3.5*1.4)	1	ROTO30	IDLER GEAR PIN	3	ROTO51	NUT (M4)	3
ROTO09	AIR INLET	1	ROTO31	GEAR PLATE	1	ROTO52	SCREW (M4*27L)	1
ROTO12	CONE MUFFLER	1	ROTO32	SLIDING KEY	1	ROTO53	SCREW	1
ROTO13	PROTECTING RUBBER	1	ROTO33	BEARING (6200ZZ)	1	ROTO54	COVER	1
ROTO14	HOUSING	1	ROTO34	CLAMP NUT	1	ROTO56	SCREW (1/4**1"L)	1
ROTO15	SPRING PIN	1	ROTO35	BEVEL GEAR	1	ROTO58	HEX (3/16")	1
ROTO16	LEVER	1	ROTO36	WASHER	1	ROTO59	WASHER	1
ROTO17	BEARING(696ZZ)	1	ROTO37	SCREW (M4*6)	1	ROTO60	WASHER	1
ROTO18	REAR PLATE	1	ROTO38	PLASTIC HOUSING	1	ROTO61	SCREW (M4*6)	1
ROTO19	ROTOR BLADE	4	ROTO40	TOOTHED PULLEY	2	ROTO64	PIN (3*5)	1
ROTO20	ROTOR (9T)	1	ROTO41	KEY (3*13)	3	ROTO75	REGULATOR	2
ROTO21	PIN	2	ROTO42	BELT DRIVE SHAFT	1	ROTO76	O-RING (P9)	3
ROTO22	CYLINDER	1	ROTO43	TOOTHED BELT	1	ROTO77	O-RING (P10)	1
ROTO23	FRONT PLATE	1	ROTO44	LEFT BEVEL GEAR (20T)	1	ROTO78	SNAP RING	1
ROTO24	BEARING(608ZZ)	5	ROTO45	BELT DRIVE SHAFT (1/4")	1	ROTO79	VALVE STEM	1
ROTO25	WASHER	1	ROTO46	SCREW (3*18L)	11	ROTO80	SPRING	1
ROTO26	BEARING(6001Z)	1	ROTO47	NUT	1	ROTO81	VALVE	1
ROTO27	THREAD RING GEAR	1	ROTO48	HANDLE RING	1	ROTO82	WASHER	1
ROTO28	IDLER GEAR (16T)	3	ROTO49	HANDLE	1			
ROTO29	NEEDLE BEARING	3	ROTO50	VACUUM ADAPTER	3			

*To locate the part on the schematic, please take the last 2 digit of the part #

Technical Details	Speed RPM	Power KW/HP	Length mm/inch	Weight kg/lb	Air Consumption LPM / CFM	Noise (DB) LpA LwA	Uncertainty(DB) KpA KwA	Vibration m/s ²	Air Inlet inch	Pressure Bar / PSI
ROTO 100	4,000	0.37 (0.5)	277 (10.9)	1.5 (2.8)	113 (4)	82.3 93.3	3	2.42	1/4	6.3/90

NOVATEK CORPORATION LIMITED WARRANTY

The **TOOLS** manufactured by **NOVATEK CORPORATION** are warranted to be free from defects in material and workmanship for a period of **180 DAYS** from the date of purchase from **NOVATEK CORPORATION**. This warranty does not apply to accessories. All electrical components of the tool are also warranted to be free from defects in material and workmanship for a period of **180 DAYS**.

This warranty applies only to **TOOLS** purchased new from **NOVATEK CORPORATION**. This warranty does not apply to any **TOOL** which has been abused, misused, modified or repaired by someone other than **NOVATEK CORPORATION** or its authorized repair center.

If a **TOOL** proves defective in material or workmanship within one year of purchase from **NOVATEK CORPORATION**, it should be returned to **NOVATEK CORPORATION**, transportation pre-paid. The return must be authorized by a **RETURN MERCHANDISE AUTHORIZATION NUMBER (R.M.A. #)** obtained from **NOVATEK CORPORATION** prior to returning the **UNIT**. All packages must show clearly on the outside the return merchandise authorization number. All packages received without any R.M.A. # on the outside will be refused by **NOVATEK CORPORATION** receiving department.

Warranty claims will only be considered upon adequate proof of date of purchase. **NOVATEK CORPORATION** will, at its option, **REPAIR or REPLACE DEFECTIVE PARTS**. Repairs or replacements are warranted as above for the remainder of the original warranty period. The sole liability of **NOVATEK CORPORATION** and the user's exclusive remedy under this warranty is limited to the repair or replacement of the defective product.

THERE ARE NO OTHER WARRANTIES EXPRESSED OR IMPLIED AND **NOVATEK CORPORATION** SHALL NOT BE LIABLE FOR INCIDENTAL, CONSEQUENTIAL OR SPECIAL DAMAGES OR ANY OTHER EXPENSES OR REPAIR OR REPLACEMENT AS DESCRIBED ABOVE.

All warranty claims should be forwarded to:

NOVATEK CORPORATION
700 Schell Lane
Phoenixville, PA 19460

ATTENTION: CLAIM AND SERVICE DEPARTMENT
R.M.A. # _____

CALL Toll Free at 1-866-563-7800 for your RMA number prior to shipping.

Also include a brief description of the problem as well as a phone number, contact name and return address in case **NOVATEK CORPORATION** service personnel has to get in contact with you.